


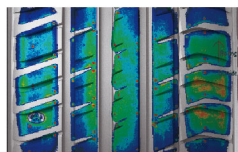


Size	LI	SI	XL			
195/45R16	84	W	XL	C	B	72 B
215/45R16	90	V	XL	C	B	72 B
205/55R17	95	W	XL	B	B	72 B
215/55R17	98	Y	XL	B	B	72 B
215/55R17	98	V	XL	B	B	72 B
225/55R17	101	Y	XL	B	B	72 B
205/50R17	93	Y	XL	C	B	72 B
215/50R17	95	Y	XL	B	B	72 B
225/50R17	98	Y	XL	C	B	72 B
235/50R17	100	Y	XL	C	A	72 B
205/45R17	88	Y	XL	C	B	72 B
215/45R17	91	Y	XL	C	B	72 B
225/45R17	94	Y	XL	D	B	72 B
235/45R17	97	Y	XL	D	A	72 B
245/45R17	99	Y	XL	C	A	72 B
205/40R17	84	W	XL	C	B	72 B
215/55R18	99	W	XL	B	B	72 B
225/55R18	102	Y	XL	B	B	72 B
235/55R18	104	W	XL	B	A	72 B
225/50R18	99	W	XL	C	B	72 B
245/50R18	104	Y	XL	C	A	72 B
225/45R18	95	Y	XL	C	B	72 B
235/45R18	98	Y	XL	C	A	72 B
245/45R18	100	Y	XL	C	A	72 B
215/40R18	89	Y	XL	C	B	72 B
225/40R18	92	Y	XL	D	B	72 B
235/40R18	95	Y	XL	C	A	72 B
245/40R18	97	Y	XL	C	A	72 B
255/40R18	99	Y	XL	C	A	73 B
265/35R18	97	Y	XL	C	A	73 B
255/55R19	111	W	XL	C	A	73 B
235/50R19	103	W	XL	C	A	72 B
245/50R19	105	Y	XL	C	A	72 B
255/50R19	107	Y	XL	B	A	73 B
225/45R19	96	Y	XL	C	B	72 B
235/45R19	99	W	XL	C	A	72 B
245/45R19	102	Y	XL	C	A	72 B
255/45R19	104	Y	XL	C	A	73 B
225/40R19	93	Y	XL	D	B	72 B
235/40R19	96	Y	XL	C	A	72 B
245/40R19	98	Y	XL	D	A	72 B
255/40R19	100	Y	XL	C	A	73 B
275/40R19	105	Y	XL	C	A	73 B
235/35R19	91	Y	XL	D	A	72 B
245/35R19	93	Y	XL	D	A	72 B
255/35R19	96	Y	XL	D	A	73 B
275/35R19	100	Y	XL	C	A	73 B
235/55R20	105	W	XL	B	A	72 B
255/55R20	110	W	XL	B	A	73 B
255/50R20	109	Y	XL	B	A	73 B
245/45R20	103	Y	XL	C	A	72 B
275/45R20	110	Y	XL	C	A	73 B
245/40R20	99	Y	XL	C	A	72 B
275/40R20	106	Y	XL	C	A	73 B
275/35R20	102	Y	XL	C	A	73 B





# EffeX Sport TH202



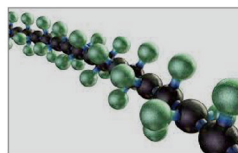
**Innovative handling profile design technology maximizes tire crown and carcass curves**

Delivers uniform tire ground pressure distribution for an optimized footprint Resulting in improved tire handling and braking capabilities and improved wear



**Larger high-rigidity block design is used at the outer shoulder**

Delivers precise handling and braking when changing lanes or cornering rapidly Resulting in exceptional handling and steering in critical overtaking situations and cornering performance at high speeds



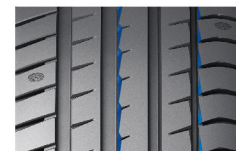
**The new generation of ultra-high-performance compound technology adopts the latest polymer molecular technology combined with high-grip resin/high-silicon content**

Delivers adaptive dynamic characteristics Resulting in good braking and grip on dry/wet roads, whilst at the same time significantly reducing rolling resistance



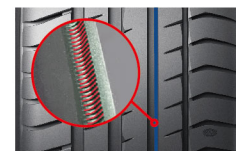
**Asymmetrical pattern, featuring four wide longitudinal grooves and large shoulder grooves**

Delivers straight line stability, and effective water evacuation through the middle and sides Resulting in significantly improved braking and handling characteristics on dry and wet roads



**The transverse pattern groove adopts unique chamfering technology and narrow width design technology**

Delivers effective destruction of water film built up on wet and slippery roads Resulting in exceptional anti-aquaplaning performance and grip in the wet



**Longitudinal groove mute technology**

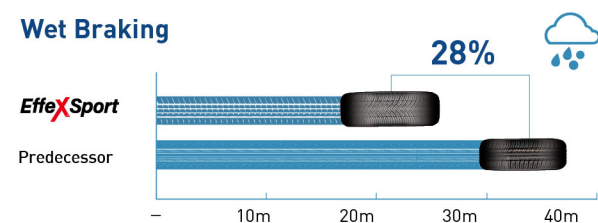
Delivers noise dampening Resulting in low noise and acoustic comfort Designed with EV noise control in mind

- The new generation UHP tyre delivers a product that meets the demanding performance expectation of the segment
- It delivers an EV ready platform featuring exceptional braking and handling improvements with reduced rolling resistance



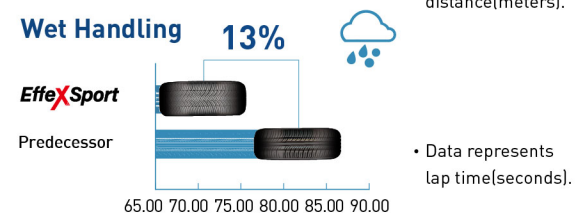
## Performance

### Wet Braking



• Data represents braking distance(meters).

### Wet Handling



• Data represents lap time(seconds).